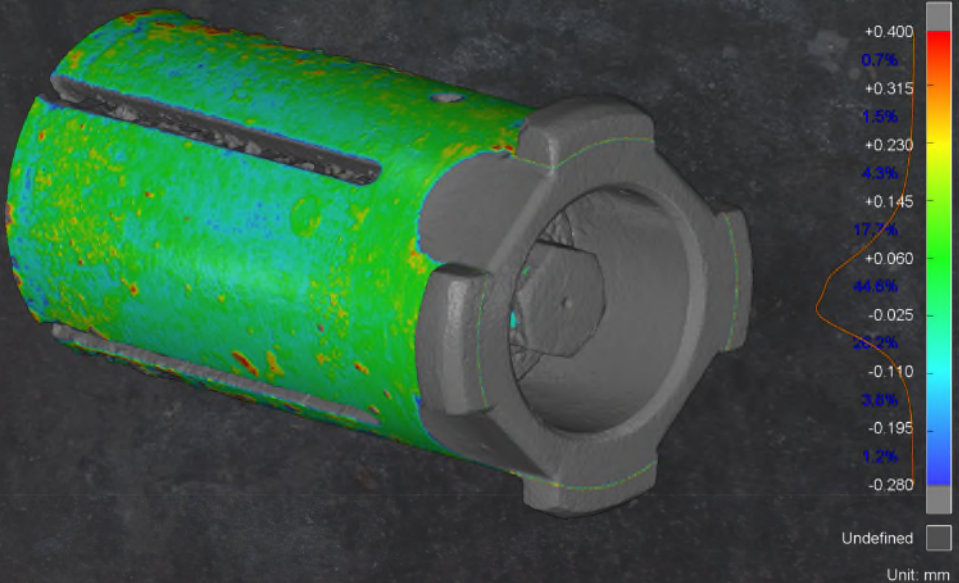




VIEWPORT3

DIVER-ENABLED 3D INSPECTION



End-to-end dimensional problem solving

WHO WE ARE

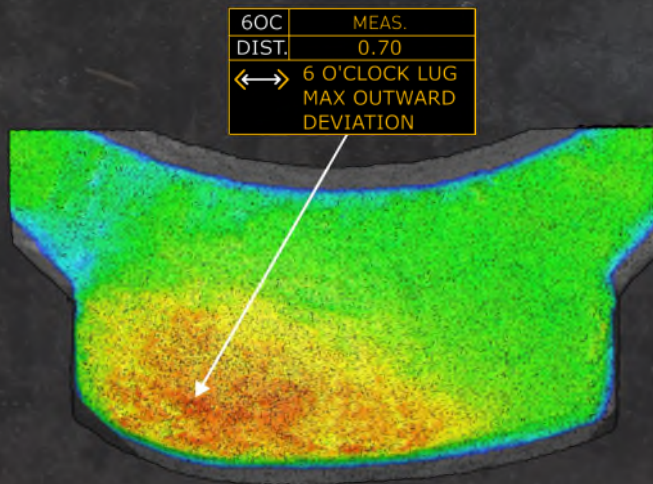
For subsea and topside teams who cannot afford dimensional uncertainty, Viewport3 provides **Engineering Grade Dimensional Assurance** - not generic 3D scanning - delivering accurate, verifiable and **decision-ready data**, even in **complex, constrained or emergency scenarios**.

WHAT WE DO

Viewport3 combines industry leading, **ultra-high resolution 3D photogrammetry**, verifiable accuracy and **subsea project expertise** to produce high-value answers - not just point clouds.

WHY DIMENSIONAL ASSURANCE MATTERS

Assumptions cost time and money. **Engineering Grade Dimensional Assurance** replaces uncertainty with verified dimensional data that engineers can rely on to make confident, **right-first-time decisions**.



ROV BUCKET ANALYSIS BY DIVER

THE PURPOSE - Provide precise, engineering-grade dimensional data to identify why two subsea components would not align as designed.

THE CHALLENGE - A North Sea operator was unable to engage a Linear Actuator Override Tool (LAOT) with the mating lugs on a subsea Christmas Tree (XMT). Previous inspection attempts and physical modification had failed, indicating a likely dimensional or tolerance issue that could not be resolved without high-accuracy subsea dimensional data.

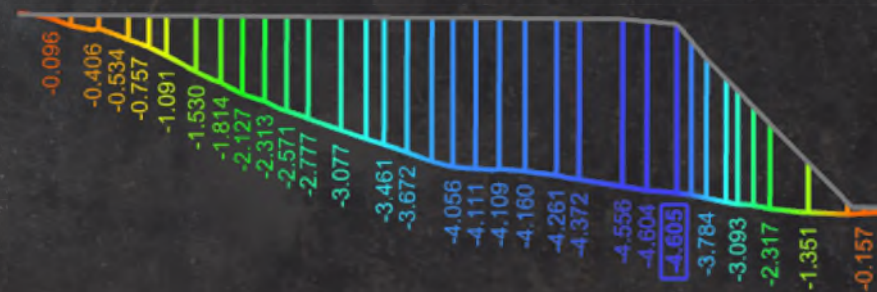
THE OPERATION - Viewport3 deployed diver-operated subsea photogrammetry kits and issued tailored capture procedures, supported by a 3D guidance animation to assist saturation divers during a campaign with a constrained operational window.

THE SOLUTION - Following Viewport3's capture methodology, divers collected imagery suitable for engineering-grade 3D reconstruction, achieving sub-0.1 mm accuracy. The operation was supported throughout by remote technical oversight by Viewport3 to ensure data completeness and verifiable accuracy.

THE RESULT

- Confirmation of bucket stalk cylindrical compliance.
- Evidence of material removal.
- Issue 3D file suitable for Finite Element Analysis (FEA).
- Crack tracing and quantification.
- Profile mis-match via deviation analysis (see below).

This provided the client with decision-ready engineering insight, enabling corrective action based on measured fact rather than assumption.



SCAN TO
VIEW
CASE STUDY



SEE DIMENSIONAL ASSURANCE IN ACTION

Viewport3 delivers confidence where dimensional accuracy matters most - reducing risk, avoiding re-work and enabling 'right-first-time' decisions through engineering grade dimensional assurance.

Photogrammetry-led 3D inspection & assessment



SCAN TO VIEW OUR
RANGE OF SERVICES

Trusted by operators, asset-owners and marine contractors globally.



contact@viewport3.com
www.viewport3.com