



VIEWPORT3

# DIMENSIONAL ASSURANCE

9	MEAS.
DIST.	786.52
LINK LENGTH	

8	MEAS.
DIST.	244.85
↔ UPPER INTERGRIP	

6	MEAS.
AREA	14,906
● PROFILE SURFACE AREA [mm <sup>2</sup> ]	

7	MEAS.
DIA.	131.80
⊘ MIN. BAR STOCK DIAMETER	

End-to-end dimensional problem solving

# WHO WE ARE

For subsea and topside teams who cannot afford dimensional uncertainty, Viewport3 provides **Engineering Grade Dimensional Assurance** - not generic 3D scanning - delivering accurate, verifiable and **decision-ready data**, even in **complex, constrained or emergency scenarios**.

# WHAT WE DO

Viewport3 combines industry leading, **ultra-high resolution 3D photogrammetry**, verifiable accuracy and **subsea project expertise** to produce high-value answers - not just point clouds.

# WHY DIMENSIONAL ASSURANCE MATTERS

Assumptions cost time and money. **Engineering Grade Dimensional Assurance** replaces uncertainty with verified dimensional data that engineers can rely on to make confident, **right-first-time decisions**.



# ADVANCED 3D MOORING INSPECTION

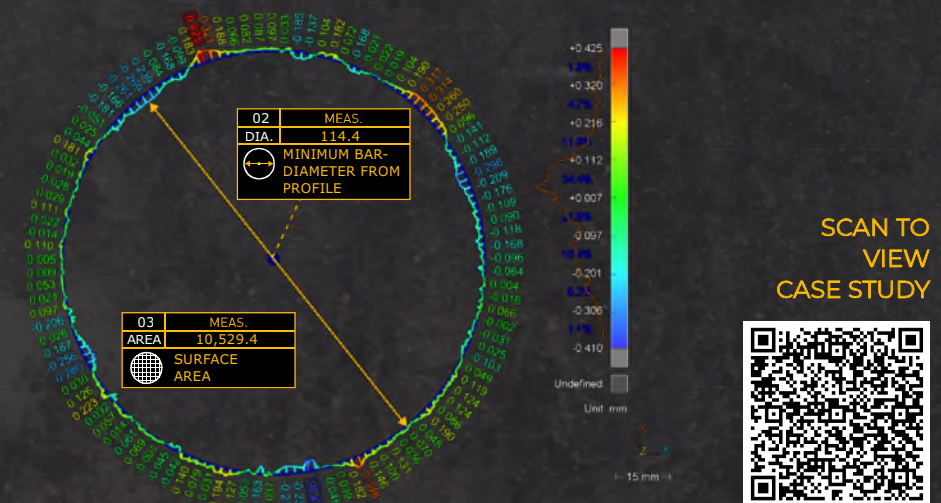
**THE PURPOSE** - Deliver engineering-grade dimensional assurance for subsea mooring line inspection, providing precise, verifiable 3D measurements critical for integrity assessment and class approval.

**THE CHALLENGE** - Provide ultra-high definition 3D scanning for three floating North Sea assets in accordance with Viewport3's Lloyd's Register certification and improve on the quality of data gleaned from traditional caliper inspections.

**THE OPERATION** - The Viewport3 team were engaged to perform technical-grade 3D photogrammetry across three assets over the course of a wider 30-day campaign.

**THE SOLUTION** - Viewport3 deployed the prototype ZECO camera system, helping to improve on the campaign schedule and ensuring engineering grade dimensional data. All works completed by ROV.

- THE RESULT**
- Full 3D scans of >50 mooring links completed.
  - Approved 3.4u inspection reports submitted to Certifying Authority.
  - Dimensional analysis completed on all identified anomalies.
  - Bespoke work-flow used to report surface area (mm<sup>2</sup>) from bar-stock profile slice.



# SEE DIMENSIONAL ASSURANCE IN ACTION

Viewport3 delivers confidence where dimensional accuracy matters most - reducing risk, avoiding re-work and enabling 'right-first-time' decisions through engineering grade dimensional assurance.

Photogrammetry-led 3D inspection & assessment



## SCAN TO VIEW OUR RANGE OF SERVICES

Trusted by operators, asset-owners and marine contractors globally.



[contact@viewport3.com](mailto:contact@viewport3.com)  
[www.viewport3.com](http://www.viewport3.com)